



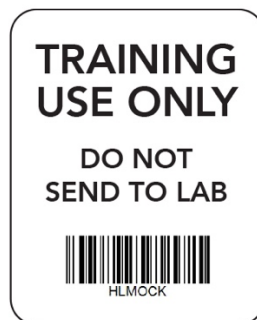
**HOUND LABS®**

## HOUND® CANNABIS BREATHALYZER SYSTEM RELEASE NOTES

Release Date	March 15, 2024
Release Version	0.5.359
System Downtime	Base station will announce an update is available and recommend installing immediately. Installation is user-initiated following an on-screen prompt to install. Installation should take approximately 15-20 minutes to complete once initiated.
Customer Impact Risk	Minimal
Communicated Externally?	Not proactively
Downtime Impact	During the software installation, users CANNOT: <ul style="list-style-type: none"><li>• Perform breath collections</li><li>• Connect to Retriever™ for result transmission or receive onboarding information such as users IDs and passwords</li></ul>
Release Summary	<ul style="list-style-type: none"><li>• Base station will recall previously used log-ins</li><li>• Base station will provide routine maintenance alerts</li><li>• Base station will log users out after 10 minutes of inactivity</li></ul>

### CHANGE: BASE STATION WILL NOT REPORT TRAINING COLLECTIONS TO RETRIEVER™

- Impact: Collections performed with training cartridges will no longer be visible in the Retriever™ online results portal.
- Purpose: Training collections are intended to orient the collector or user to workflow at the base station and don't require reporting to Retriever. Removing training collections from Retriever helps maintain the data integrity of 'live' collections in the database.

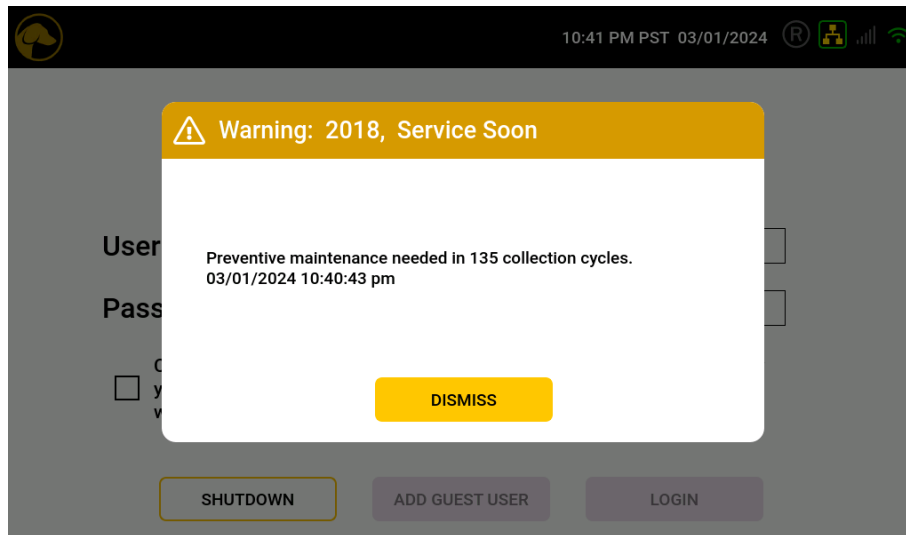




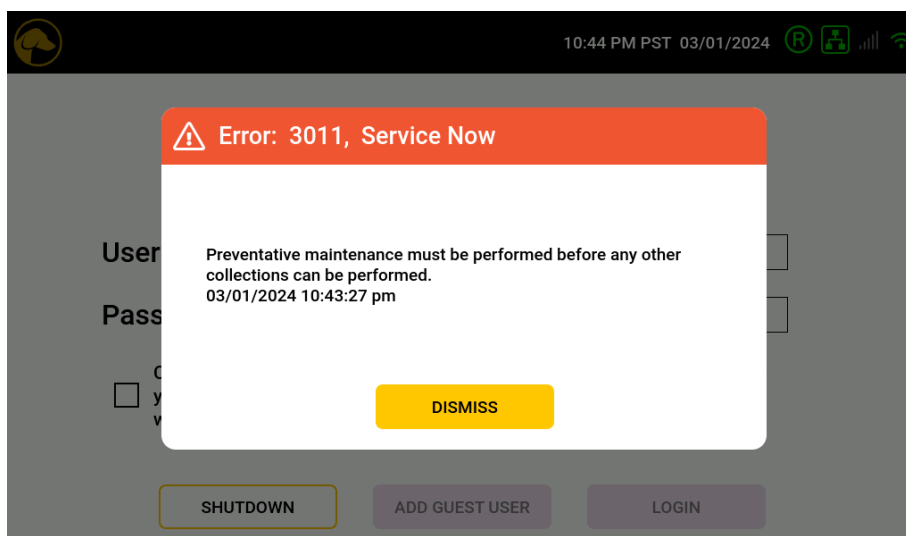
## CHANGE: BASE STATION WILL ALERT USER FOR MAINTENANCE

- Impact: The base station will alert the user at specified intervals when routine maintenance is required. The maximum number of collections that can be performed prior to routine maintenance is 1500. The current number of collection cycles performed on the base station can be viewed in metrics listed on the 'About' screen.
- Purpose: This functionality ensures the base station is operating optimally by proactively alerting the user to initiate a request for maintenance.

### Pending Maintenance Alert



### Maintenance Required Alert





'About' Screen: Displays Base Station Metrics

**System Admin** 12:57 PM PST 02/28/2024

## About

Manufacturer	Hound Labs, Inc.	Total Power-On Time	73 Days 17:55:13
Serial Number	CNS23050401	Total Collection Time	00:08:24.348
Mfg Date	02/09/2024	Collection Cycles	65
Lan IP Address	192.168.1.92	Average Monthly Cycles	21
Lease Obtained	11:41 AM PST 02/20/2024	Cycles Until Service	1435
Lease Expires	Wed Feb 21, 2024 11:41:05 am	Data Disk Usage	23% of 18GB used
✓ Wifi IP Address	192.168.1.93	Retriever Service State	Idle
Lease Obtained	11:41 AM PST 02/20/2024	Retriever API Version	1.5.428
Lease Expires	Wed Feb 21, 2024 11:41:06 am	Current Software Version	0.5.350
Cell IP Address	10.195.237.5	Current Firmware Version	0.5.350
ATT ICCID	8910390000062675475	Available Updates	None Available
ATT IMSI	Not Available		
VZW ICCID	89148000007658424110		
VZW IMSI	Not Available		
Status	Connected		
SPN	VERIZON		
IMEI	350344983100247		

**CHANGE: USER WILL BE AUTOMATICALLY LOGGED OUT OF BASE STATION AFTER 10 MINUTES OF INACTIVITY**

- Impact: If a user is inactive for 10 minutes, the base station will log the user out and require the user to log back in to perform collections.
- Purpose: This is an enhanced security feature.



# HOUND LABS®

## CHANGE: BASE STATION WILL RECALL USER LOGINS

- Impact: To enable this functionality, the user enters the first few characters of their username and presses the 'Tab' key. If these characters correspond with a single, unique username, the base station will auto-populate the remaining characters in the Username field. If the characters correspond to multiple usernames, the base station will prompt the user to enter additional characters and try again.
- Purpose: This functionality improves usability of the base station by reducing the keystrokes required to login.

Username Entry: Type characters and press Tab to check if a matching unique username can be found.

